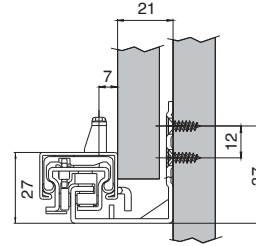
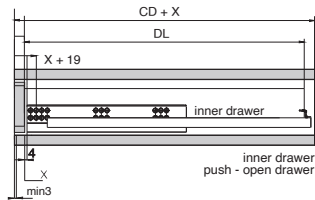
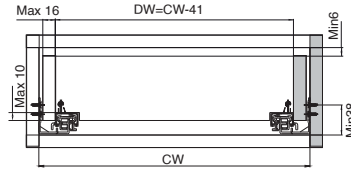


Full-extension 2D drawer slides with soft-closing and synchronized mechanism, supporting a load-bearing capacity of up to 35 kg.

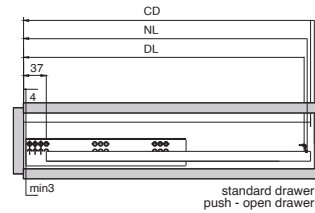
**Installation**



CW= Inside net width  
CD= Min cabinet depth  
DW= Drawer net width  
DL= Drawer Length  
NL= Nominal slide length



DL=NL-10  
CD=NL+5



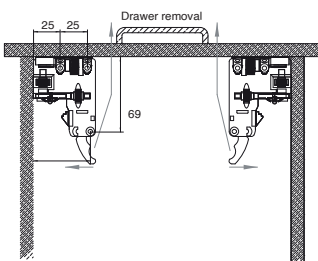
**Description**

<b>Material:</b>	Steel
<b>Usage:</b>	Drawers, concealed undermount
<b>Panel Thickness:</b>	18 mm
<b>Mechanism:</b>	Soft close, synchronized
<b>Type of pull out:</b>	Full extension
<b>Type of the lock:</b>	2D

**Item ID No.**

Finish/Colour	Installation length L mm	Extension length AL mm	Load bearing capacity kg	Cat. No.
Galvanized	250	185	up to 30	<b>BG-413.14.160</b>
	300	290	up to 30	<b>BG-413.14.161</b>
	350	340	up to 35	<b>BG-413.14.162</b>
	400	390	up to 35	<b>BG-413.14.163</b>
	450	440	up to 35	<b>BG-413.14.164</b>
	500	490	up to 35	<b>BG-413.14.165</b>
	550	540	up to 35	<b>BG-413.14.166</b>
	600	590	up to 35	<b>BG-413.14.167</b>

**Locking Device**

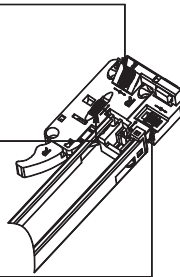


Bottom view of drawer

Rotate the knob to adjust the drawer forward or backward + 3 mm - 0 mm

Rotate the knob to adjust the drawer to the left or right ±2 mm

Rotate the knob to adjust the drawer up and down + 3 mm - 0 mm



**Drilling Pattern**

